



InfinityLine A⁺

Modular Automation System

High-end PCBs require a new approach to manufacturing. With shrinking structure sizes and substrate thicknesses, traditional processes and machines have reached their limit. In addition to new process systems, which can overcome these limitations, factory automation is a key enabler to increase yield and availability of your equipment and to reduce your production costs.

SCHMID counts on more than 20 years of expertise to offer a portfolio of automation solutions that provide a significant improvement to different production lines. Our holistic approach covers the path of the product through the factory, from incoming material in the warehouse, to material handling between processing steps and quality control. We offer a design for the smart factory of the future using the best automation and intralogistics available.

Product Handling Details

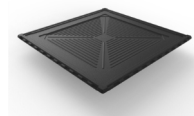
FOUPs

Transport and storage of sensitive substrates with protection against particle contamination, ESD- and mechanical damages. FOUPs are designed to meet industry standards for wafer transport, storage and fully automated workflows.



Trays

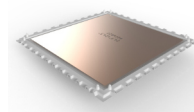
The trays were designed to protect thin and ESD-sensitive PCBs and substrates during transportation.



The trays are stackable and automatically seal to prevent contamination of the products during transportation or storage.

Frames

For the thinnest substrates and the most demanding processes, the products are automatically clamped in a carrier frame. The frame enables a contactless process from both sides. Frames are available for wet and dry processing. Where applicable, products stay in the frames for several processes.



Compatibility

The automation systems offers interfaces to all SCHMID machines and a variety of 3rd party systems to provide reliable product handling, product tracking, high uptime and yield. The solutions are based on universal robot solutions that can handle ultra-thin substrates in horizontal and vertical process systems.

Advantages

- Advanced substrate technology
- No limits for traditional processes
- Clean room and high volume production
- Interfaces for the automated fab
- Integrated process system
- Product tracking and identification

Intralogistics

The material flow in the fab, providing materials at the right time at the right place, is the most critical parameter to optimize the uptime and throughput of your process systems. We understand each machine and each cluster and the interaction within the production flow. Using this know-how, we provide smart intralogistics that takes over the material flow in your fab, from incoming material, through sequential processing to final inspection and transport of the finished products back to the warehouse.

